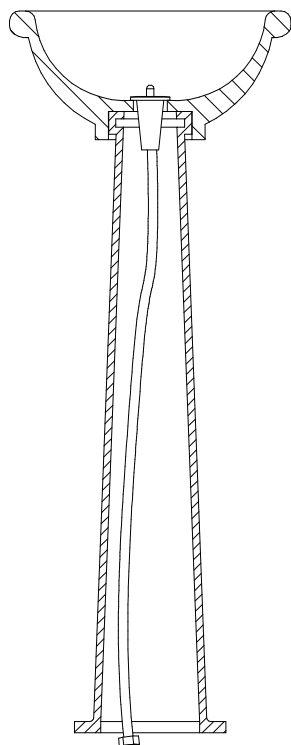
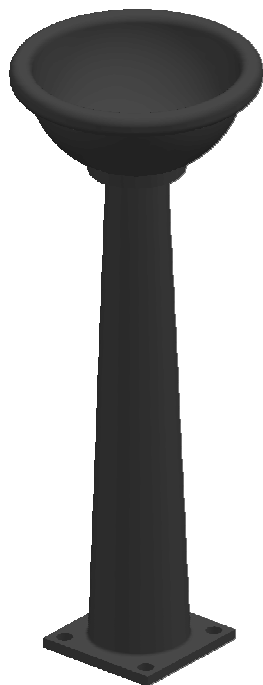
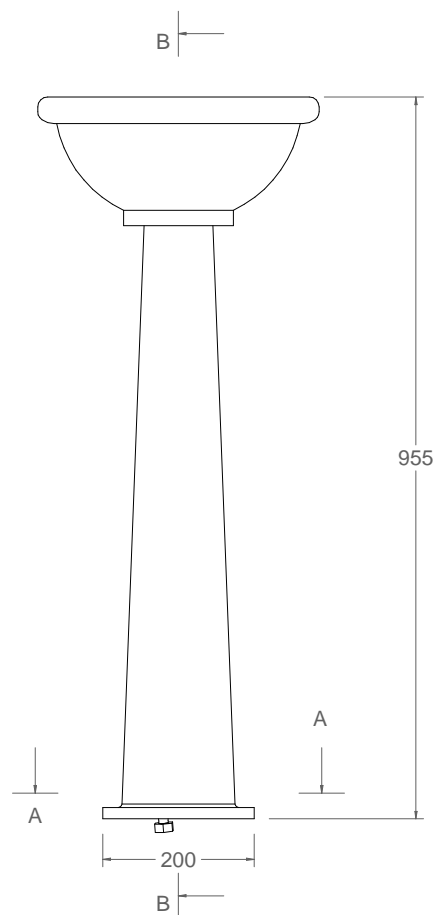


# C-12A

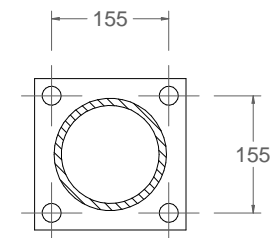
Fuente modelo "Infantil" alta



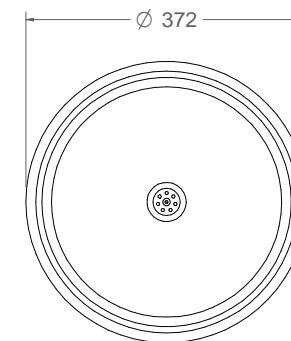
CORTE B-B  
1:10



vista alzado  
1:10



detalle anclaje A-A  
1:10



vista en planta  
1:10

Material: Hierro, fundición gris tipo 20

Peso: 48,2 kg

Acabado: Pintado oxirón

Conexión de entrada: Rosca hembra 1/2 pulgada.

Opcionalmente se puede incorporar un pulsador de pie.